

Easy Glasses Case ST002F

DIMENSIONS

10cm(4") W × 18.5cm(7½") H



MATERIALS NEEDED:

- Outer layer : 1/16 yard
- Lining : 1/16 yard
- Fusible fleece : 1/16 yard

MATERIAL LIST

Main Panel

- ① 22cm × 20.5cm (8¾" × 8¼") Outer layer
- ① 22cm × 20.5cm (8¾" × 8¼") Lining
- ① 20cm × 18.5cm (8" × 7½") Fusible fleece

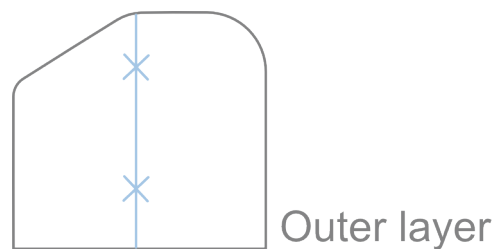
Strap

- ① 4cm × 22cm (1⅝" × 8¾") Outer layer

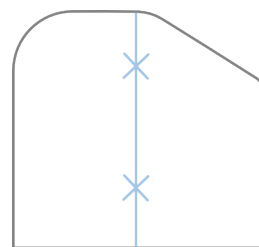
Video Tutorial Link

<https://youtu.be/booflNsq0d0>

Please watch the Youtube video first before making this item with this pattern.



Outer layer



Lining

When printing, make sure you select "no page scaling".

Copyright © 2017 SEWINGTIMES All rights reserved.

This pattern is protected by international copyright law and may not be distributed, resold or copied, either in whole or in part, or in any format.

TEST BOX
5cm x 5cm(2" x 2")



Main panel

1cm(3/8") seam allowance excluded
Interfacing: Cut 1



Easy Glasses Case ST002F
1cm(3/8") Seam allowance included.



SewingTimes

Strap

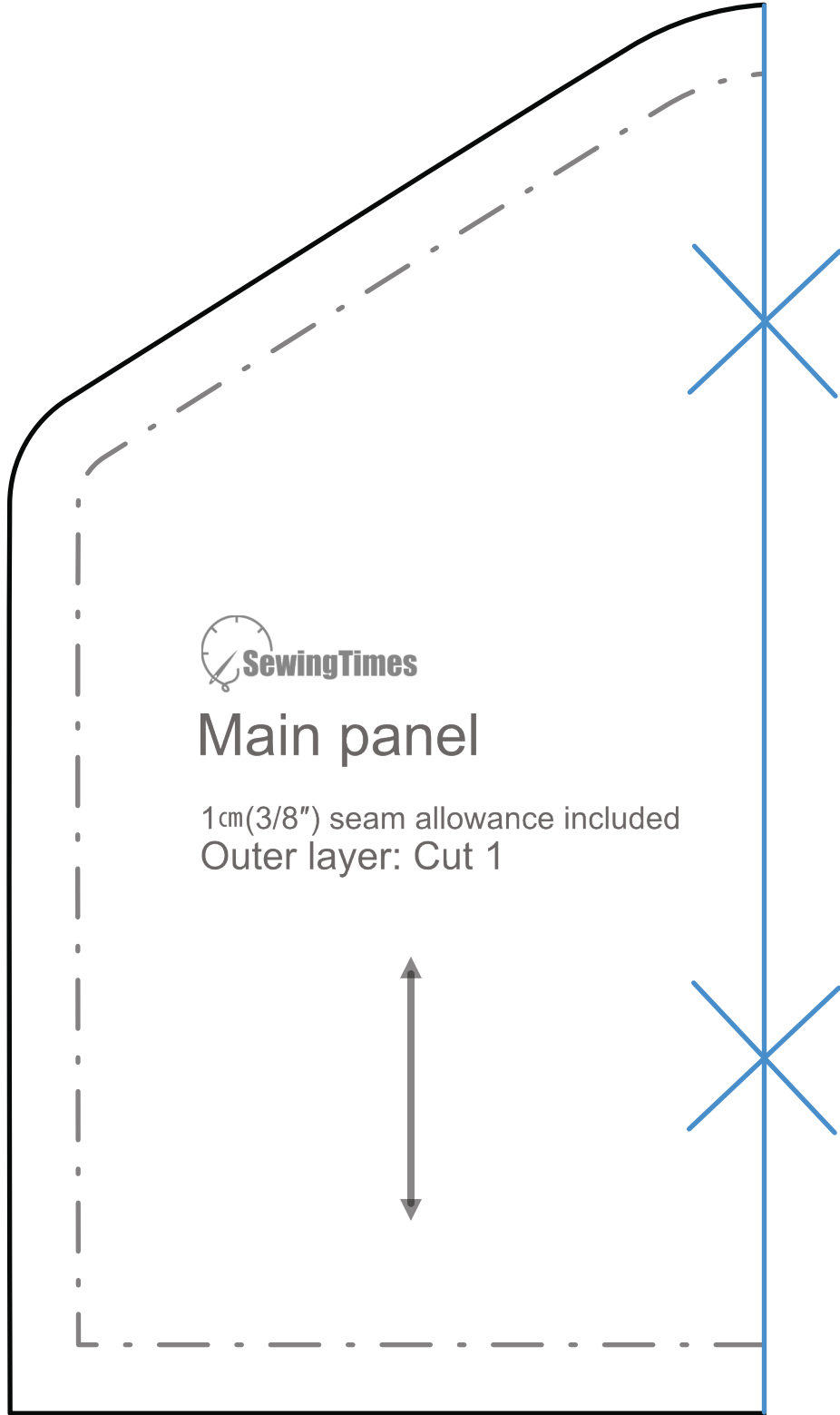
Outer layer
: Cut 1



SewingTimes

Main panel

1cm(3/8") seam allowance included
Outer layer: Cut 1



To make the piece the full size do this:

Match the blue lines together at the stars and sellotape together to form the whole of Outer layer.

Do this before placing on the fold and cutting the fabrics.

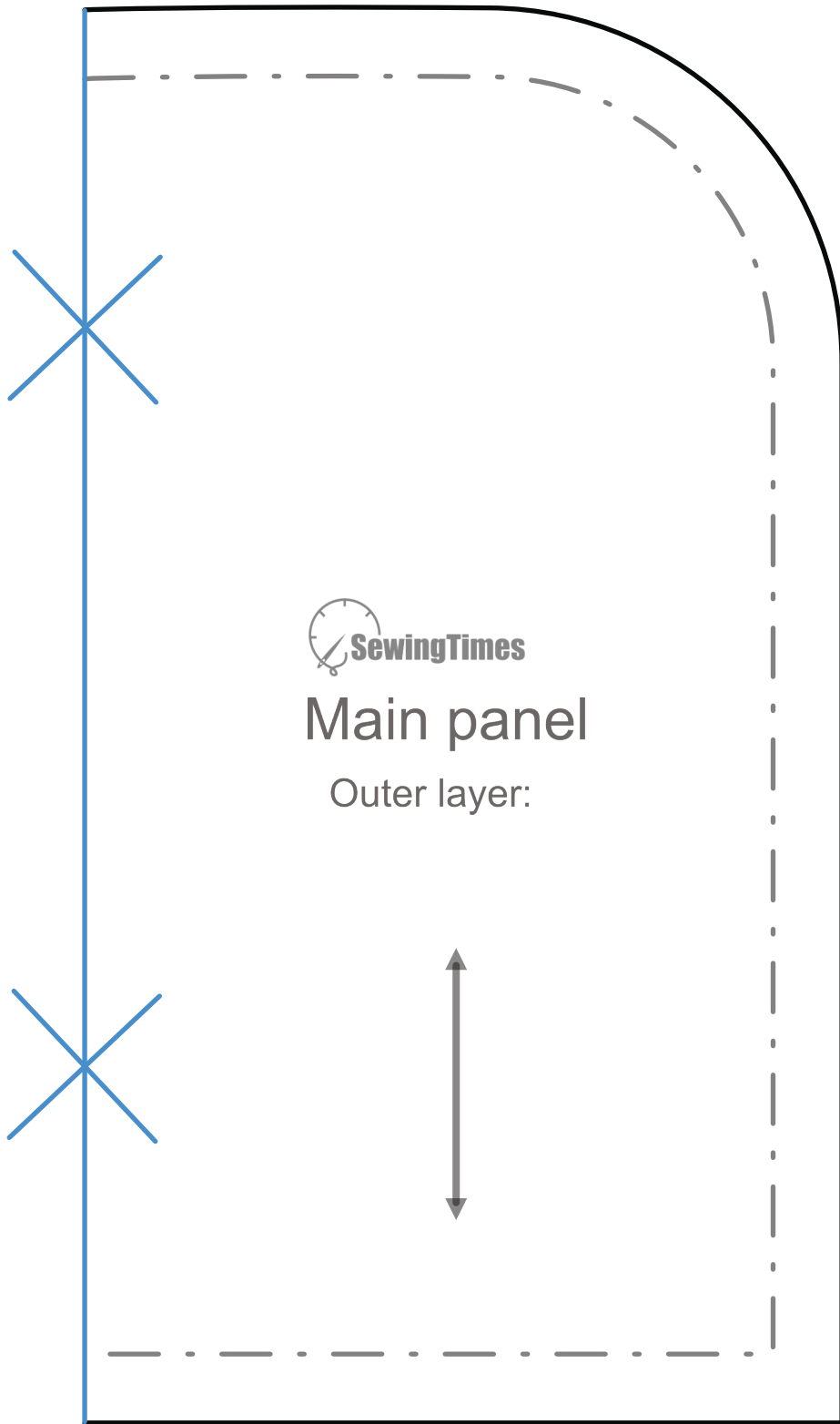
Easy Glasses Case ST002F

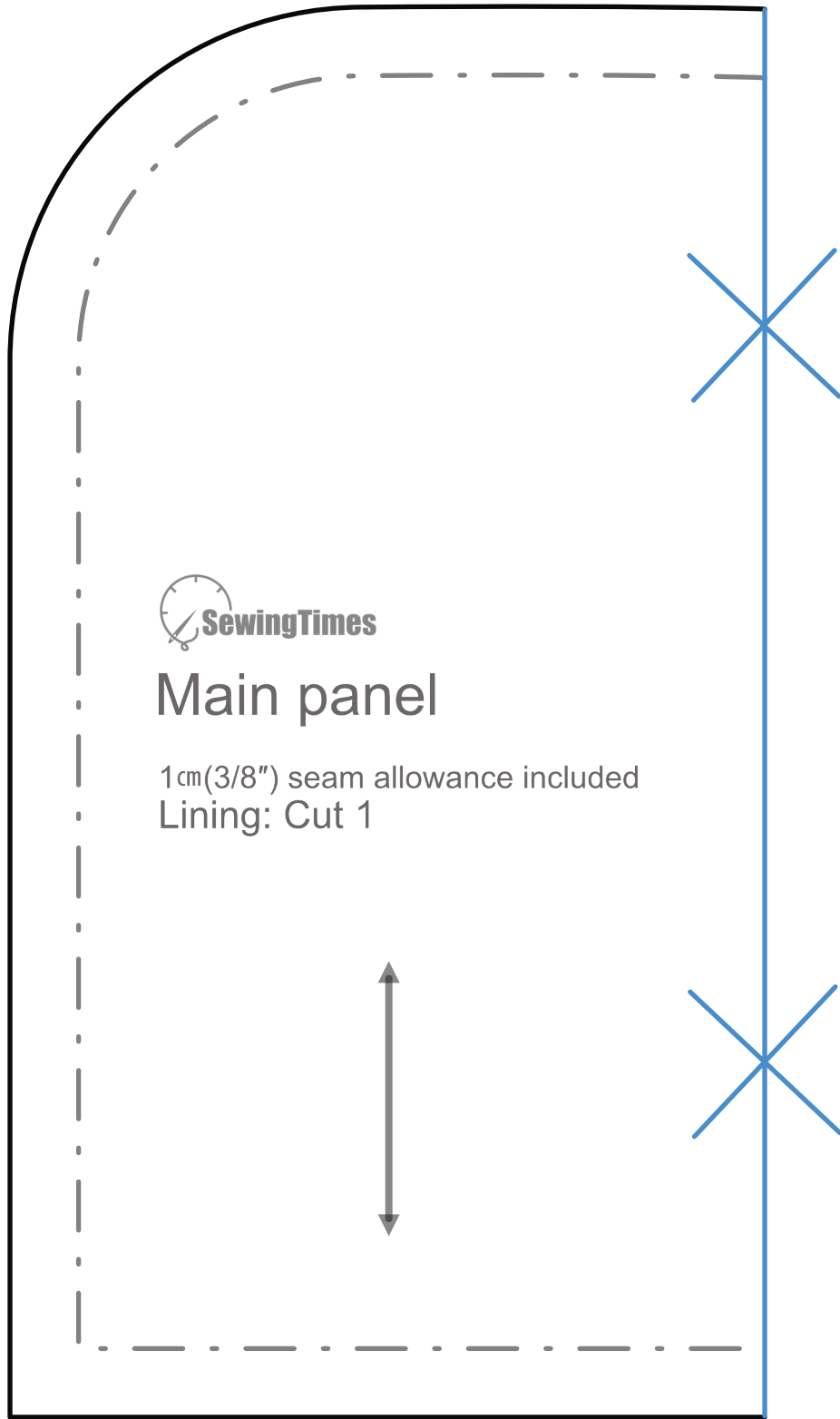
1cm(3/8") Seam allowance included.

To make the piece the full size do this:

Match the blue lines together at the stars and sellotape together to form the whole of Outer layer.

Do this before placing on the fold and cutting the fabrics.





To make the piece the full size do this:
 Match the blue lines together at the stars and sellotape together to form the whole of Lining.
 Do this before placing on the fold and cutting the fabrics.

To make the piece the full size do this:

Match the blue lines together at the stars and sellotape together to form the whole of Lining.

Do this before placing on the fold and cutting the fabrics.

