

HEART COIN PURSE ST003F



DIMENSIONS

15cm(6") W × 12.5cm(5") H



MATERIAL LIST - A Type

Back Panel

- ① 17.5cm × 15cm (6³/₄" × 6") Outer layer
- ① 17.5cm × 15cm (6³/₄" × 6") Lining
- ① 15cm × 12.5cm (6" × 5") Fusible fleece

Front Panel

- ② 9.5cm × 15.5cm (3³/₄" × 6¹/₄") Outer layer
- ② 9.5cm × 15.5cm (3³/₄" × 6¹/₄") Lining
- ② 7cm × 12cm (2³/₄" × 4³/₄") Fusible fleece

Tap

- ① 6cm × 5cm (2³/₈"×2") Outer layer

Others

- ① 10cm(4") Zipper_seam allowance excluded



MATERIAL LIST - B Type

Back Panel

- ① 17.5cm × 15cm (6³/₄" × 6") Outer layer
- ① 17.5cm × 15cm (6³/₄" × 6") Lining
- ① 15cm × 12.5cm (6" × 5") Fusible fleece

Front - Right Panel

- ① 11cm × 15.5cm (4³/₈" × 6¹/₄") Outer layer
- ① 11cm × 15.5cm (4³/₈" × 6¹/₄") Lining
- ① 9cm × 13cm (3⁵/₈" × 5¹/₈") Fusible fleece

Front - Left Panel

- ① 6cm × 15.5cm (2³/₈" × 6¹/₄") Outer layer
- ① 6cm × 15.5cm (2³/₈" × 6¹/₄") Lining
- ① 4cm × 13cm (1⁵/₈" × 5¹/₈") Fusible fleece

Tap

- ① 6cm × 5cm (2³/₈"×2") Outer layer

Others

- ① 12.5cm(5") Zipper_seam allowance excluded

Video Tutorial Link

<https://youtu.be/HSL1KAanxM8>



MATERIALS NEEDED:

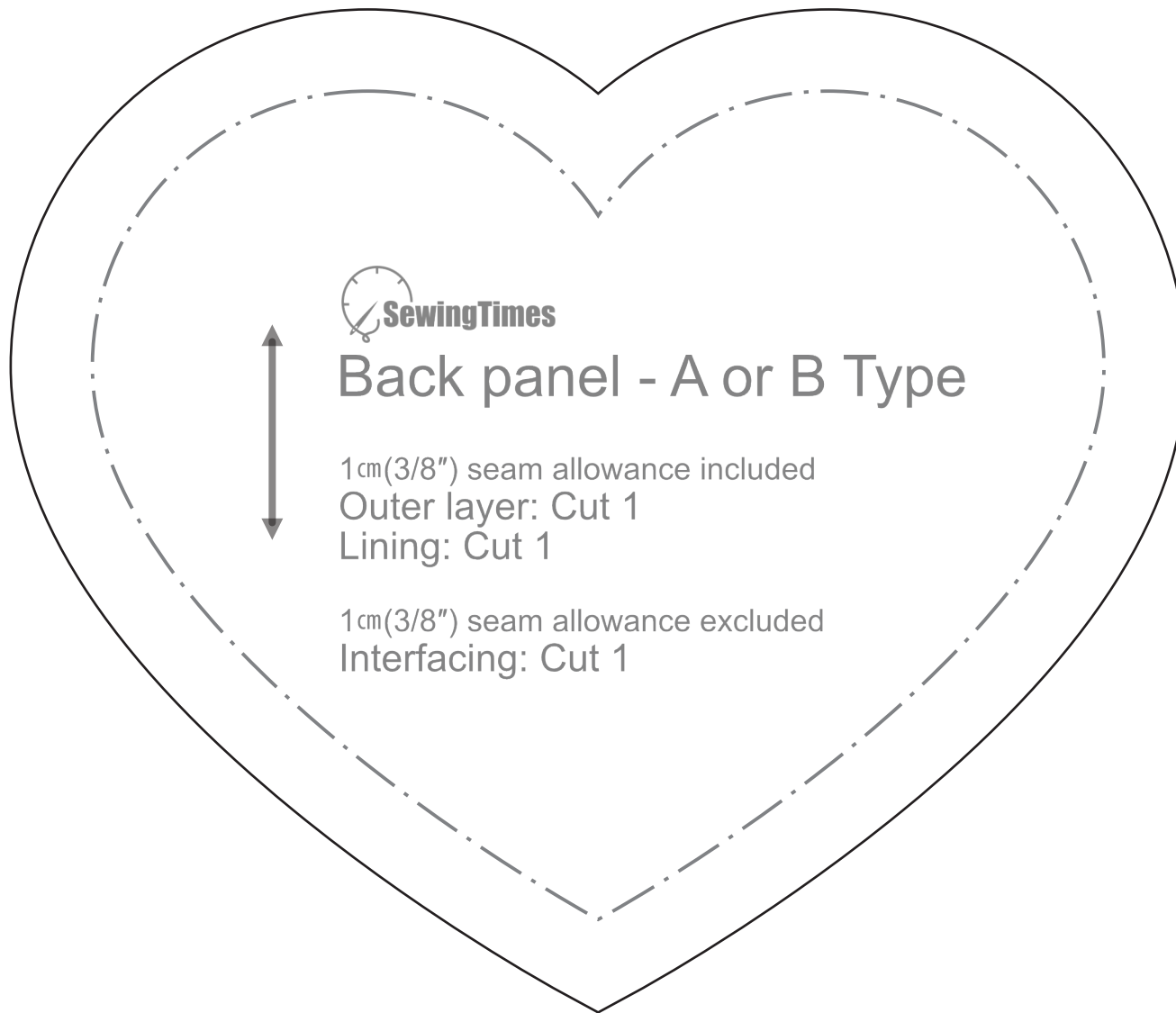
- Outer layer : 1/16 yard
- Lining : 1/16 yard
- Fusible fleece : 1/16 yard

Please watch the Youtube video first before making this item with this pattern.

When printing, make sure you select "no page scaling".

Copyright © 2017 SEWINGTIMES All rights reserved.

This pattern is protected by international copyright law and may not be distributed, resold or copied, either in whole or in part, or in any format.



SewingTimes

Back panel - A or B Type

1cm(3/8") seam allowance included

Outer layer: Cut 1

Lining: Cut 1

1cm(3/8") seam allowance excluded

Interfacing: Cut 1



Tap

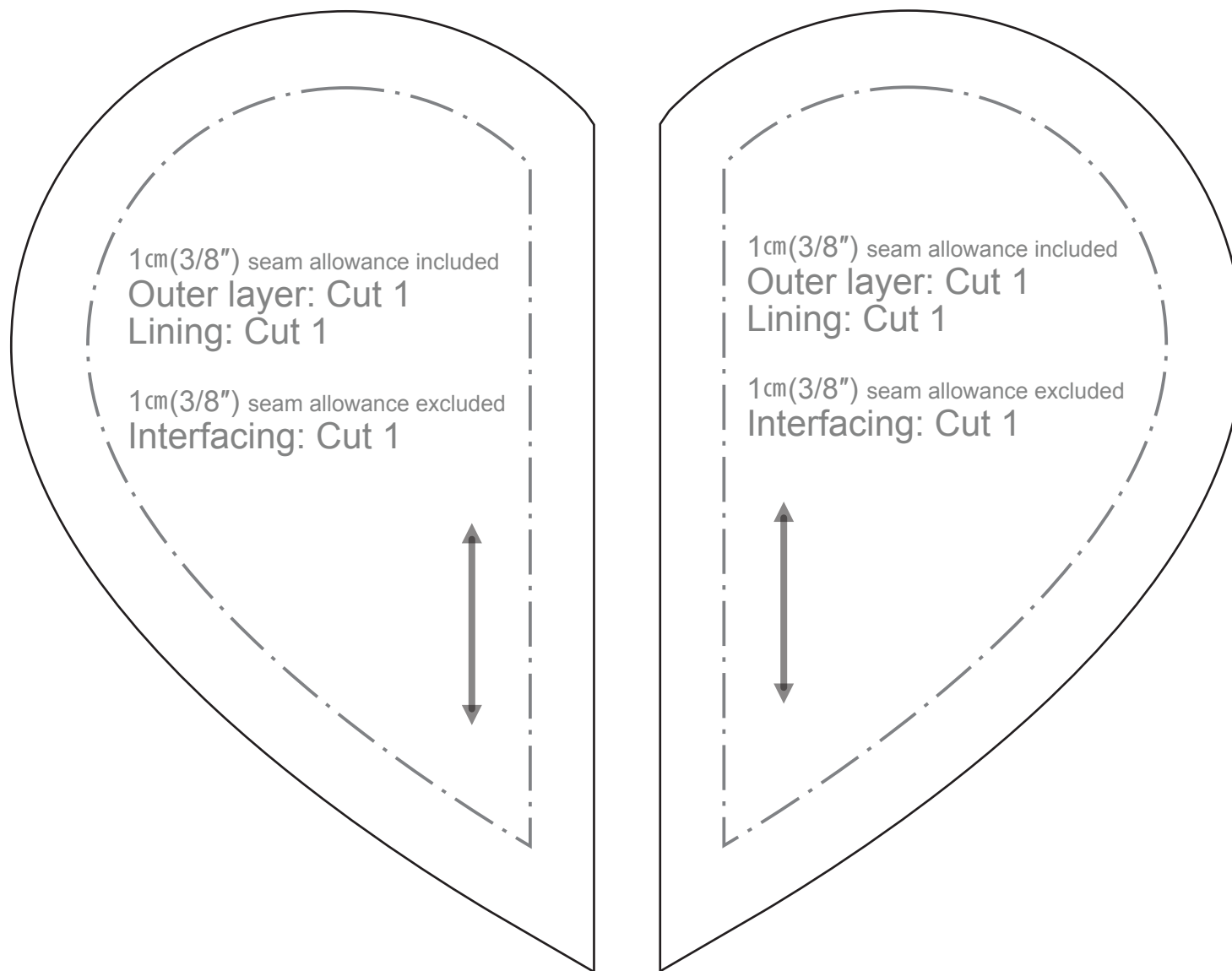
Outer layer: Cut 1

TEST BOX

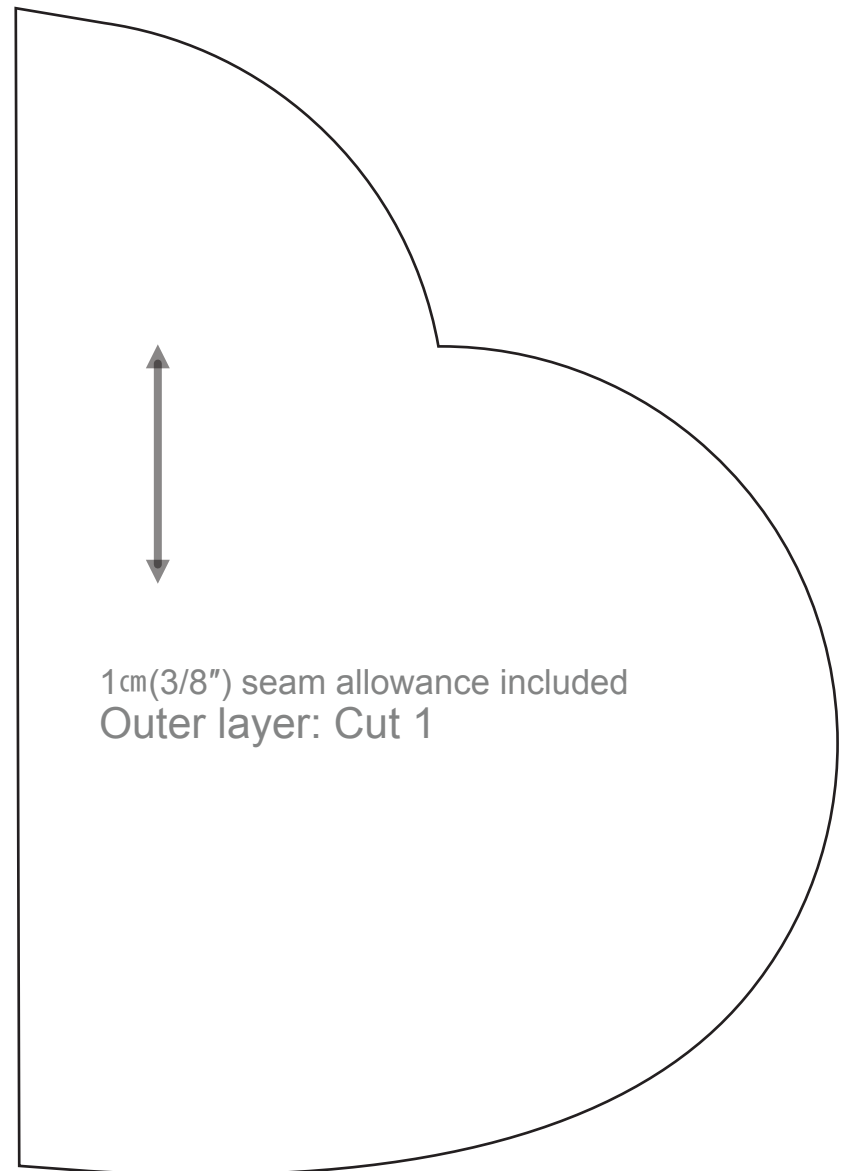
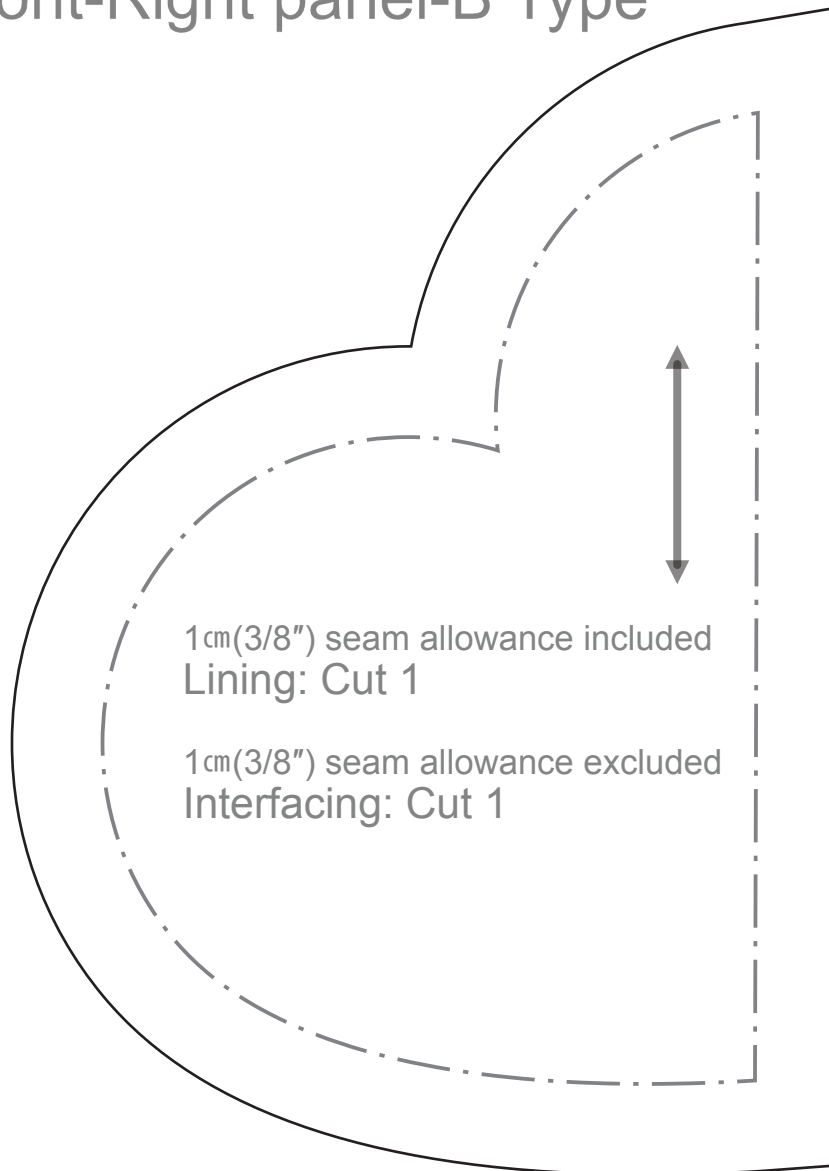
5cm × 5cm(2" × 2")

HEART COIN PURSE ST003F
1cm(3/8") Seam allowance included.

Front panel - A Type



Front-Right panel-B Type



Front-Left panel-B Type

