



ST005F

SIMPLE FANNY PACK

PDF PATTERN
WITH VIDEO TUTORIAL

www.insewingtimes.com

SIMPLE FANNY PACK ^{ST005F}

FINISHED SIZE

26.5cm(10½") W × 12.5cm(5") H × 5cm(2") D

MATERIAL LIST

- **Fabric**
 - Quilting weight cotton
 - (1/4) Yard for Outer layer
 - (1/4) Yard for Lining
- **Interfacing**
 - (1/4) Yard of fusible fleece
- **Others**
 - 37cm(14½") Zipper_seam allowance included
 - 2.5cm (1") Wide Webbing Strap 100cm(39½")
 - 2.5cm (1") Wide Side Release Buckle
 - 2.5cm (1") Wide Triglides Slide

YOUTUBE TUTORIAL

<https://youtu.be/VLqJlqlwXdk>



Copyright © 2024 SEWINGTIMES All rights reserved.

This pattern is protected by international copyright law and may not be distributed, resold or copied, either in whole or in part, or in any format.

Copyright ©2024. SEWINGTIMES. All rights reserved.

SYMBOLS IN THIS PATTERN

- **Fold Lines**



The black dashed line indicates the fold lines. Draw the pattern as is and flip the pattern. Align the center which is the dashed line draw the other half again. Or fold the fabric and place your pattern piece on the folded edge of the fabric.

- **Notches**



Blue star shape are called notches and indicate you need to mark these points to enable you to match up the pattern when sewing. Match the blue lines together at the stars and sellotape together to form the whole of panel. Do this before placing on the fold and cutting the fabrics.

- **Finish Lines**



The gray dash-single dotted line indicates the finishing line excluding the seam allowance. Also, it is the cutting line for the interfacing that without the seam allowance.

- **Cutting Lines**



The black solid line is the cutting line that includes the seam allowance.

- **Grain Lines**

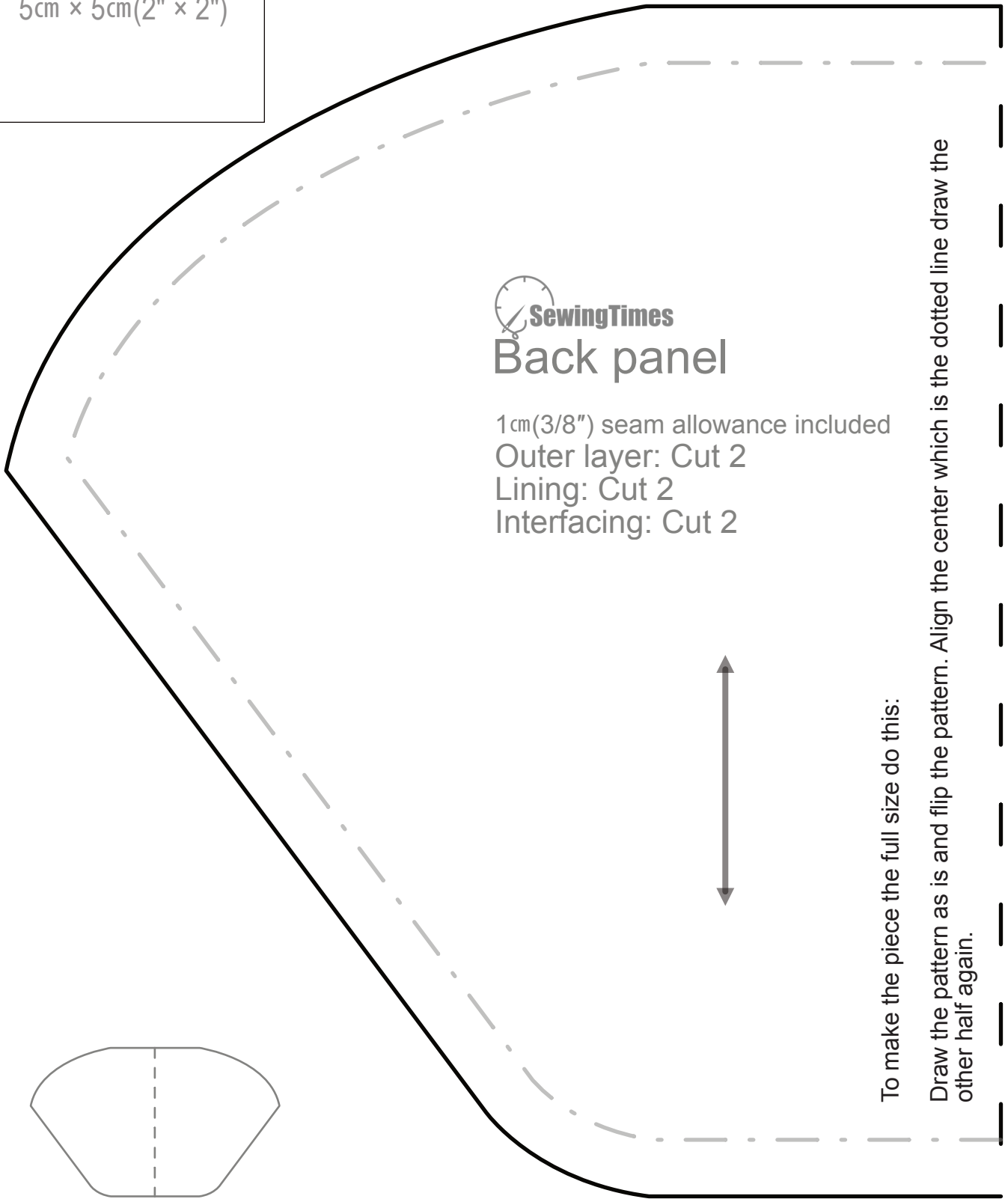


These double-ended arrows tell you to place the pattern piece parallel to the selvage and along the fabric grainline.

*When printing, make sure you select "no page scaling".

*1cm(3/8") Seam allowance included

TEST BOX
5cm x 5cm(2" x 2")



 **SewingTimes**
Back panel

1cm(3/8") seam allowance included
Outer layer: Cut 2
Lining: Cut 2
Interfacing: Cut 2

To make the piece the full size do this:
Draw the pattern as is and flip the pattern. Align the center which is the dotted line draw the other half again.

